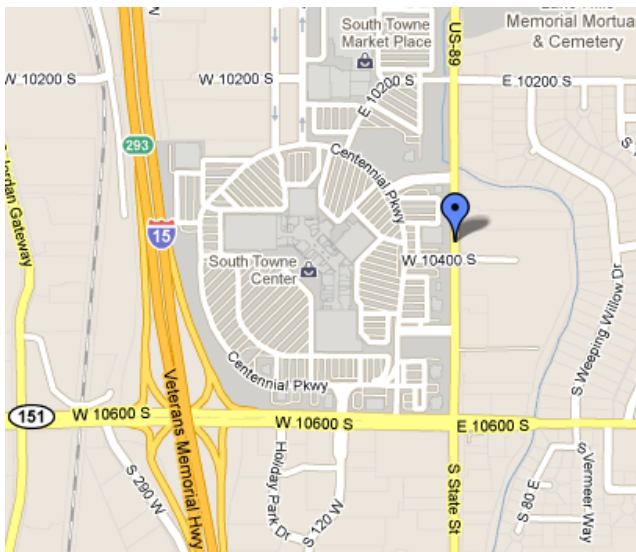


# Driving Tour: Milo Andrus Historic Sites in the Salt Lake City Area

- There are five stops on our tour. You start in Sandy and work your way north, ending in downtown Salt Lake Lake.
- Total driving time (without stops) is about 1 hour and 10 minutes.
- If desired, you can reverse the order and start in Salt Lake and end in Sandy.
- To see the interactive Google Map version of this driving tour go to [www.tiny.cc/milotour](http://www.tiny.cc/milotour).



## FROM SALT LAKE CITY TO SANDY

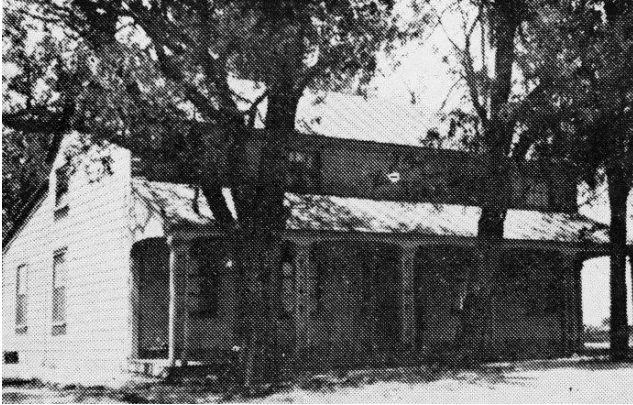


To get to the first stop from Salt Lake City, go south on I-15 for 12 miles. Take exit 293 for 10600 South and turn left (east). At State Street turn left and go to 10400 South. Turn into the mall parking lot. Park on the north side of the Ethan Allen furniture store.

(Approximate driving time: 20 minutes)

## 1. ANDRUS HALFWAY HOUSE AND FARM—ORIGINAL LOCATION

10330 South State Street, Sandy, Utah



The first stop on our tour is the original location of the Andrus halfway house and farm. The house was built in 1858 and sat on 160 acres of land. At that time the area was known as Jordan Bottoms, Dry Creek, or Crescent, Utah. The property was on present-day State Street which was a busy road then, as it is now. The house became an inn providing food and lodging for travelers moving up and down the Wasatch Front. Travelers were provided supper, breakfast and overnight lodging for \$1. The house became known as the Andrus Halfway House because it was in between two other inns, one at 6400 South and the other at the point of the mountain.

The inn was built and run by Milo's third wife Lucy Loomis. Wives Adeline Alexander, Mary Webster, Jane Munday, Emma Covert and Francenia Tuttle and their children lived and worked there off and on as well. The inn was operated by Lucy Loomis until 1868 when she moved to Spanish Fork and opened another inn in that city which proved to be very successful. It is believed that wife Emma Covert ran the Halfway House after that. Milo sold the property in 1875 for \$2,500.

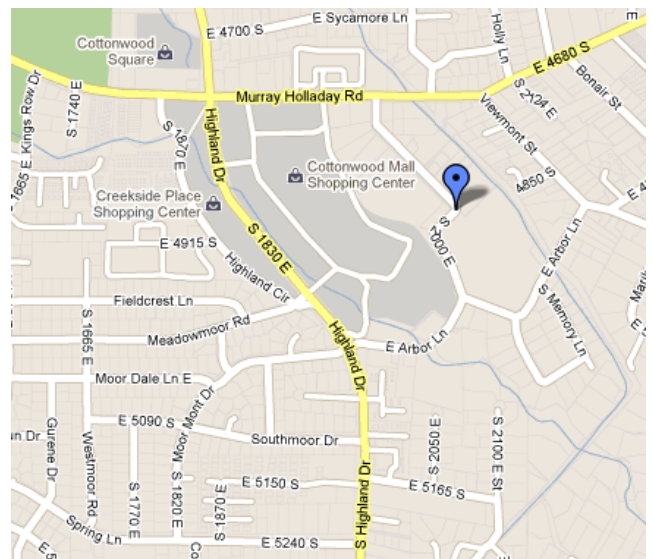
The house was moved to "This Is The Place" Heritage Park in 1980 (see driving tour stop 4).

The house's original location is now part of the parking lot for the Southtowne Mall. There is a historical marker on State Street telling about the house and its history. The marker is on the west side of the street, just north of 10400 South. To find the it, turn into the mall parking lot at 10400 South, park north of the Ethan Allen furniture store, and then walk north on the sidewalk until you see it. It is slightly hidden between two trees.

## FROM ANDRUS HALFWAY HOUSE TO MILO'S GRAVESITE

**Return to I-15 and head north. Merge onto I-215 Belt Route going east. Take exit 8 toward 2000 East. At the stoplight turn left onto Highland Drive. Just after 6200 South the road divides, veer right to stay on Highland Drive. (Watch for the Wendy's on the right side, it is right where the road divides.) After about 1.5 miles you will pass the old Cottonwood Mall site. Turn right on Murray-Holladay Road. Turn right on Memory Lane. Where Memory Lane curves to the right you will see the entrance to Holladay Memorial Park cemetery. Milo's gravestone is on the southwest side of the cemetery.**

**(Approximate driving time: 15 minutes)**



## 2. MILO ANDRUS GRAVESITE

### Holladay Memorial Park, 4900 South Memory Lane, Holladay, Utah

When Milo died in 1893 at the age of 79 he was living in Oxford, Idaho. He is buried here in Holladay with four of his wives (Sarah Miles, Elizabeth Brooks, Ann Brooks and Margaret Boyce).

Why is he buried in Holladay? Of all the years he lived in Utah, he lived in the Big Cottonwood area the longest. Big Cottonwood is part of present-day Holladay. He lived here off and on between missions and other assignments from 1850-1874.

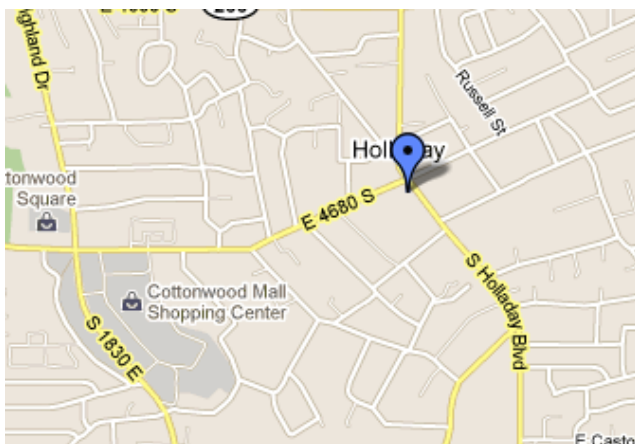
Holladay Memorial Park is the oldest cemetery in Utah outside Salt Lake City. Pioneers were buried here starting in 1848. Sarah Miles was buried here in 1851; hers is the oldest marked grave in the cemetery.

Milo and Margaret Boyce's graves are next to each other. They are part way up the little hill in the south-west section of the cemetery under a tree. The graves of Sarah Miles, Elizabeth Brooks and Ann Brooks are near the top of the hill in about the center of the cemetery.

During the 2011 reunion it is planned that the graves will be marked with flags to make them easier to find.



### FROM MILO'S GRAVESITE TO MILO'S BIG COTTONWOOD PROPERTY



Milo's Big Cottonwood property is located east of the cemetery, in what is now the center of Holladay. Go north from the cemetery. Turn right on Murray-Holladay Road. Go about a half mile to where Murray-Holladay Road crosses Holladay Boulevard. Park in the Holladay Pharmacy (Walgreen's) parking lot.

(Approximate driving time: 2 minutes)

### 3. MILO'S BIG COTTONWOOD PROPERTY

4690 South Holladay Boulevard, Holladay, Utah



After moving to Utah in 1850, Milo settled here in the Big Cottonwood area, 12 miles south of Salt Lake City. He lived here off and on between missions and other assignments from 1850-1874. Around 1858 we know he was serving as the LDS bishop of the Big Cottonwood ward.

Currently the Holladay Pharmacy is on this property. Outside the pharmacy is a historical marker telling about Milo and his wife, Ann Brooks, and about what Holladay was like when they lived there.

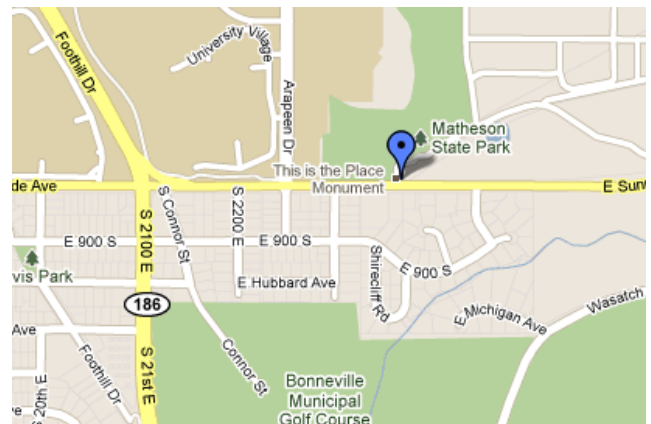
This photo (left) was taken from the location of Milo's property, looking east toward Mt. Olympus. (Maybe this was the view out his front door.)

Four blocks south on Holladay Boulevard is Milo Way. It is named after Milo Jr., Milo's son with Sarah Miles. Milo Way was originally a driveway on Milo Jr.'s property leading to his house. There is an LDS chapel on Milo Way; many Andrus Family reunions have been held there.

### FROM MILO'S BIG COTTONWOOD PROPERTY TO ANDRUS HALFWAY HOUSE—CURRENT LOCATION

The Andrus Halfway House is now found at This Is The Place Heritage Park, near Hogle Zoo. Head north on Holladay Boulevard. Turn right on 3900 South. Merge onto I-215 going north. After about 2 miles, take exit 1 for Foothill Drive. After about 3 miles, turn right on Sunnyside Avenue. The entrance to This Is The Place Heritage Park is a half mile up on the left. There is an entrance fee for the park.

(Approximate driving time: 20 minutes)



#### 4. ANDRUS HALFWAY HOUSE—CURRENT LOCATION

##### This Is The Place Heritage Park, 2601 East Sunnyside Ave, Salt Lake City, Utah

The Andrus Halfway House was moved from Sandy to This Is The Place Heritage Park in 1980. It was the 6<sup>th</sup> house to be moved to the park.

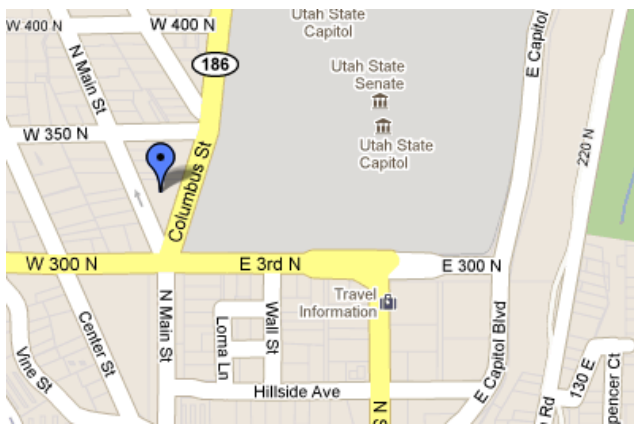
The house was selected in part because it is an early example of a building method called “balloon framing”. Balloon framing was made possible by newly invented circular saws that were being used in lumber mills and by steam-powered machines that made nails. It was a shift from houses made with massive post and beam frames. Balloon framing used standardized 2-inch thick lumber that could be put up and nailed together very quickly. The time and labor savings over traditional framing was dramatic.



If you have never been to the park, This Is The Place is a living history village that recreates pioneer life in Utah before the coming of the railroad in 1869. There are 40+ original or replica homes and shops, including a Native American village and Brigham Young's farm house. Activities at the park include pony rides, petting corral, and mini-train. You can also participate in pioneer chores and crafts. In the summer there are authentic craft demonstrations by working tradesmen. The 2007 Andrus Family Reunion was held at the park.

**Park hours:** 9am-5pm. **Admission:** adults \$5-10, children \$3-7, depending on the season.

#### FROM THIS IS THE PLACE HERITAGE PARK TO DAUGHTERS OF THE UTAH PIONEER MUSEUM



The DUP museum is located in downtown Salt Lake at 300 North Main Street, near the state capital. To get there, head west on Sunnyside Avenue. Turn right on Foothill Drive. Follow Foothill Drive for about 2 miles as it curves around the University of Utah and down the hill toward downtown Salt Lake. Turn right on 900 East. Turn left on South Temple. Go for about 1 mile and then turn right on State Street. Turn left on North Temple. Turn right on Main Street. At 300 North you will see the museum ahead of you on your left. Street parking is available on Main Street on the west of the museum and 350 North/Apricot Street on the north.

(Approximate driving time: 10 minutes)

## 5. DAUGHTERS OF THE UTAH PIONEERS MUSEUM

300 North Main Street, Salt



The Daughters of the Utah Pioneers organization was founded in 1901 to preserve the history and artifacts of the Utah pioneers. The museum houses a large collection of pioneer memorabilia: paintings, guns, quilts, flags, furniture, books, wagons, hand-made clothing, and more.

Ann Brooks' piano is on display at the museum. She brought it across the plains with her in 1855. It was the second or third piano in Utah. You can find it on the second floor of the museum, right as you come up the main staircase. A pocket watch of Lucy Loomis' is also in the museum's collection.

**Hours:** Mon-Sat 9am-5pm. **Admission:** free.

If you have corrections or suggestions for improvement for this driving tour,  
please e-mail them to [webmaster@miloandrus.org](mailto:webmaster@miloandrus.org).