



MILO ANDRUS, OUR GREAT PIONEER ANCESTOR

*was an ordinary man who
sired ordinary people and
they all did extraordinary
things for our benefit!*

*I promise this: if you will learn more about the people
who share with you a common ancestry, your life will
be richer, and more satisfying.*

8 July 2005

Dear Friend,

On the date you receive this letter, 150 years ago Milo Andrus was serving as the Stake President of the St. Louis Stake; but he was busy in Mormon Grove, Kansas.* He was organizing and sending out companies of Saints heading west. Eight companies went northwest out of Mormon Grove across part of Kansas into Nebraska from whence they followed the traditional Mormon Trail to the Salt Lake Valley. Milo, himself, led the eighth company.

This letter aims to help you become better acquainted with and more interested in the family history activities which will make your eternal life more productive.

The reasons for being engaged and interested have been outlined, emphasized, expounded upon, and detailed in other publications. However, I repeat: *if you will learn more about the people who share with you a common ancestry, your life will be richer, and more satisfying. Furthermore, if you will learn more about that ancestry, it will significantly add to your eternal joy.*

How can you learn more about your ancestry? The Milo Andrus Family Organization will help you.

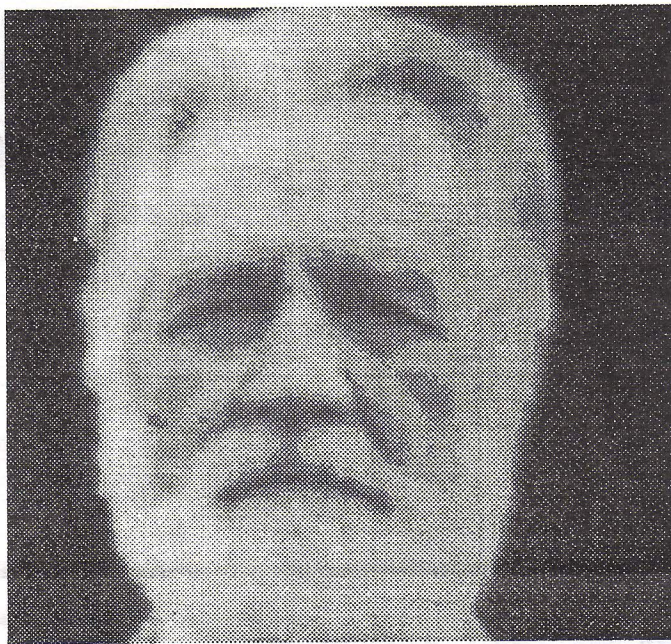
If you will do your part, you can gain the confidence and understanding you need to garner great happiness for yourself.

However, the Organization needs your help. **Dues are due.** Also, Laura Anderson's ongoing work provides an excellent example why we need you and of how you can help.

This summer Laura will be in the Midwest looking for clues about the Ruluf Andrus Family in Kansas, Iowa, Illinois and Missouri. Not being abundantly blessed with funds, she will be camping some of the time. She is spending her time and her money to do our work.

CAN ANY OF YOU DIRECT US TO SOURCES OF FUNDS, LARGE AND SMALL, SO THAT WE CAN TRULY PAY THE EXPENSES INVOLVED IN DOING THE RESEARCH IN WHICH WE ALL WILL DO WELL TO TAKE AN INTEREST??

*The Milo Andrus Family Organization will participate in a commemoration of the Mormon Grove activity in Atchison, Kansas on 23 July 2005—see page 2 of this Newsletter for details.



Is this Milo Andrus?

Well, no. This is a picture of Dolph Andrus taken in about 1959. Dolph was the son of Randolph Andrus, the youngest child of Milo Andrus and Adeline Alexander. About the time this picture was taken Dolph thought of presenting a speech like one that Milo gave in St. George on 28 June 1874 where he talked about the journey of Zion's Camp of 1834. Dolph wanted to imitate the speaking style that Milo was reported to have had, and he grew a Milo-like beard.

Berwyn Andrus, the son of Dolph recently read through the speech as it appeared in one of his father's journals. He did this reading at the meeting of the Milo Andrus Family Organization held on Saturday, 26 June 2005.

The members of the Board were careful to give instructions that we shouldn't print Dolph's speech in this Newsletter, lest some future reader might think it was the historical speech that Milo gave.

Use the Internet !

A surprising amount of information can be obtained by going to Laura's Corner on the website: www.miloandrus.org. Here is how you start.

1. Go to www.miloandrus.org
2. Click on Research
3. Open Laura's Corner
4. Open Ruluf & Azuba Andress and related families

If you are baffled by the internet, this is a good way to start improving your skill. It will lead you into things you can learn from and help with.

If you are a real geek, knowing everything, we need your help. Please get in touch with Robert or Merrill by the means shown on the website or on page 4 of this Newsletter.

Commemoration in Atchison, Kansas

On Saturday, 23 July 2005 in the city of Atchison, the Topeka Kansas Stake and the Platte City Missouri Stake will commemorate the temporary camp-city known as Mormon Grove, located 4 miles west of Atchison. A few hundred youth from these two stakes will participate in a number of activities including **a program that begins at 9 a.m.**

This program will be held in the O'Malley-McAllister Auditorium of the Benedictine College at 1020 North Second Street in Atchison. To get driving directions go to <http://www.benedictine.edu>

A bearded member of the Milo Andrus Family will show up as Milo Andrus. He will introduce Robert Andrus, Kendall Andrus and Rich Andrus who will sing on the program.

Don Andrus, present Secretary-Treasurer and past President of the Milo Andrus Family Organization along with his brother, Kay Andrus of Omaha, will set up a table display. This display will feature a number of items reminding people of the pioneers who left Mormon Grove in 1855 on their way to the Valley of the Great Salt Lake.

As stated before, Milo Andrus was the St. Louis Stake President with responsibility for the activities at Mormon Grove. Three of Milo's future wives, Elizabeth Brooks, Ann Brooks and Jane Munday were involved with this migration.

The actual sites associated with Mormon Grove are today private fields. The owners are not anxious for people to be tramping down their crops! If you go to Kansas this July or at any other time, please stay outside the boundaries of private property.

Commemoration in St. Louis, Missouri

To commemorate Milo Andrus and the Saints' contributions in St. Louis in the 1850s, The St. Louis Stake of the Church of Jesus Christ of Latter-day Saints has forged a partnership with the Jefferson National Expansion Memorial - St. Louis Gateway Arch - to tell our pioneer story more widely to the public, of which you are a part when you visit the Arch.

This is not a one day commemoration, but an ongoing effort in the Arch's Museum of Westward Expansion, located directly below the Arch. Volunteer members of the Church, in pioneer dress, will work as "interpreters" to tell the story of the Saints who came through St. Louis as well as Mormon Trail pioneers. Over 4.5 million visitors come each year to the Arch in St. Louis—the second most visited monument in the USA.

A visit to the St. Louis Gateway Arch is a great experience in itself. You may also want to visit the Winter Quarters Visitor's Center near Omaha, Nebraska if you are travelling in that general direction. Between the two, you will get an excellent understanding of the effort it took to make our nation and our Latter-day society.

Board of Directors

You can see a list of the Milo Andrus Family Organization's Board on page 4 of this Newsletter. You will do well to make the acquaintance of the representative of the wife from whom you descend. You may even be able to help him or her.

Each wife-line is expected to organize so that they can perform certain projects particular to that branch of the family. In addition to searching for the ancestry of Milo's parents, Ruluf and Azuba, the Milo Andrus Family Organization should be interested in the ancestry of each of Milo's eleven wives. As a matter of fact, we expect the wife-line representatives to have an ongoing program so that they can report on the following at our Board meetings.

- Prospects for getting an organized effort in wife ancestry research
- Prospects for getting an organized effort in wife descendancy research.
- Prospects for giving help in the Milo ancestry research.
- Prospects for getting additional contributions for Milo ancestry research.
- Prospects for getting additions to the mailing list.

You might ask, "What is the Milo Andrus Family Organization doing?"

During the past 50 years a substantial amount has been done, but the future can be even more productive. Each person who receives this letter can help in ways outlined in the 5 points listed above and expanded on in the next column.

Things you may not have known about Milo Andrus

The following timeline items are taken from the newspaper articles, mostly Deseret News and Millennial Star, recently compiled by Laura Anderson.

MISSIONS TO ENGLAND

1848-1850 1859-1861

YEARS MILO LED COMPANIES ACROSS THE PLAINS

1850 1855 1861

WORK IN ST. GEORGE

1874-1880

MEMBER OF A COMMITTEE

Who wrote to brethren imprisoned in the Idaho State Penitentiary for polygamy. 26 November 1885

IN COURT HIMSELF

Milo showed up walking with two canes. His sentence was to pay a fine of \$300, 7 January 1886

SPOKE IN GENERAL CONFERENCE

Many of the general authorities absent due to persecution. 6 October 1887

SPOKE AT FUNERAL OF ELIZA R. SNOW

7 December 1887

OPENING PRAYER

At a session of General Conference, Fall 1889

Wife Ancestry! Who????

Abigail Jane Daley was born 26 January 1815 in Marcellus, Onondaga, New York WHO KNOWS MORE THAN THIS?

Sarah Ann Miles was born 9 March 1818 in Salisbury, Meigs, Ohio WHO IS WORKING ON THE MILES LINE?

Lucy Loomis Tuttle was born 11 June 1822 in Russell, Hampton, Massachusetts HAVE TUTTLES DONE IT ALL?

Adaline Alexander was born 1 January 1835 in Weakley, Giles, Tennessee SOUTHERN GENEALOGY IS HARD!

Mary Ann Webster was born 10 July 1834 in Windle, Lancashire, England WHO'S LOOKING FOR WEBSTERS?

Elizabeth Brooks was born 7 November 1800 in North Mimms, Hertfordshire, England KNOWN ANCESTORS?

Ann Brooks was born 7 December 1832 in London, England ELIZABETH'S ANCESTORS ARE ONLY HALF OF IT?

Jane Munday was born 4 October 1832 in Coventry, Warwickshire, England SEARCHING WARWICKSHIRE?

Margaret Ann Boyce was born 12 April 1840 in Bedford, Wayne, Michigan WHERE & WHO BEFORE MICHIGAN?

Emma Covert was born 10 May 1842 in Sympronus, Cayuga, New York EMMA DESERVES SOME SEARCHING!

Francenia Lucy Tuttle was born 8 October 1845 in Westfield, Hampden, Massachusetts WHO IS LOOKING INTO THIS?

Descendancy

DON'T YOU THINK MILO WOULD BE PROUD TO KNOW THAT SOME PEOPLE IN EACH WIFE-LINE HAD COMPILED A LIST OF ALL HIS DESCENDANTS UP UNTIL 2005?

Milo Ancestry

FINDING THE GRANDPARENTS OF MILO ANDRUS IS A FIRST CLASS MYSTERY! WE NEED MORE SKILLED DETECTIVES. JOIN IN THIS SEARCH AND YOU WILL BE TAUGHT BY SOME OF THE BEST WHO ADMIT THEY NEED HELP. IT'S EXCITING AND YOU WILL BE EXHILARATED IF YOU GET INVOLVED.

Contributions

WHETHER OR NOT YOU CAN TAKE THE TIME TO HELP WITH THE WORK, CAN YOU PLEASE SEND FUNDS TO PAY THE SUBSTANTIAL EXPENSES OF THOSE WHO DO THE WORK?

Mailing List

OUR MAILING LIST IS NEAR 1500 NOW. WE NEED TO DOUBLE IT IN ORDER TO HAVE REPRESENTATION FOR THE DESCENDANTS OF MILO ANDRUS. PLEASE, SEND IN AUTHENTICATED ADDRESSES USING THE ENCLOSED FORM OR BY EMAIL.

Please, do not ignore the things you can do!

- ☞ You can pay your annual tax-deductable dues, \$20.00, for membership in the Milo Andrus Family Organization!
- ☞ You can include visits to St. Louis and/or Atchison, Kansas in your vacation plans for 2005 to learn for yourself and your family more about the way Milo Andrus participated in building our nation.
- ☞ You can join the research team to work on wife lines and other projects in progress.
- ☞ You can participate by regularly visiting www.miloandrus.org and other web sites.
- ☞ Your tax-deductable contributions to the Research Fund pay THE EXPENSES (not the professional fees) of researchers.

Use the Internet !

One reason you are still alive in the 21st Century is so that you can use technology for good purposes!

Can you do these simple things?

- ☞ Go to your local Family History Center and get some instruction on the use of the internet for Family History research. Use the resources there to trace back your family lines as far as they are recorded.
- ☞ Become familiar with RootsWeb.com and its many departments of information.

Here is Laura Anderson's Rootsweb site for Milo:

<http://www.pgwhosting.com/MiloAndrus/descendancy.php>

This is the site for genealogical data with pictures

<http://192.168.0.2/pafg99.htm#2825>

Here is Laura's site on Rootsweb site for Milo

<http://worldconnect.rootsweb.com/cgi-bin/igm.cgi?op=GET&db=miloandrus&id=I2825>

To get started you might want to go to:

<http://www.miloandrus.org/research/laurascorner.html>

Much can be done if YOU and the other recipients of this letter will make your tax-deductable DUES and your tax-deductable DONATIONS FOR RESEARCH to the Milo Andrus Family Organization. Please use the enclosed form **OR** our web site, www.miloandrus.org

Sincerely your brother,

MILO ANDRUS FAMILY ORGANIZATION BOARD

G. Merrill Andrus, President
58 South 930 West
Orem, UT 84058
meandr@sprintmail.com

Brent Andrus, Vice President
564 South Main Street
Kaysville, UT 84037
brenta51@comcast.net

Donald R. Andrus, Secretary
540 West Kim Drive
Perry, UT 84302
dandrus@brigham.net

Ray B. Andrus, Research Coordin.
665 Riverwalk Drive
American Fork, UT 84003
RandF10@utwire.com

Robert Andrus, Information Coordin.
1310 Haynes Run
Medford, NJ 08055
webmaster@miloandrus.org

Dale C. Andrus, (Abigail Jane Daley)
1956 North 360 East
Provo, UT 84604
Pdandrus@connect2.com

Irene Witmer (Sarah Ann Miles)
297 Peach Lane
Bountiful, UT 84010
iawitmer@utahis.com

Cyrus Milo McKell (Lucy L. Tuttle)
2248 East 4000 South
Salt Lake City, UT 84124
cmmc1@xmission.com

Berwyn J. Andrus (Adeline Alexander)
1551 North 400 West
Bountiful, UT 84010
berwyn@xmission.com

J. Mark Andrus (Mary Webster)
330 East 100 North
Kaysville, UT 84037
jandrus@email.utcourts.gov

Kathrine Bowthorpe (Ann Brooks)
3235 South 8920 West
Magna, UT 84044
foursocks1@hotmail.com

G. Rich Andrus (Jane Munday)
885 West 14 North
Rexburg, ID 83440
andrusr@srv.net

Afton Buchanan (Margaret A. Boyce)
120 East 20th
Tracy CA 95376
bawk3683@sbcglobal.net

Matthew Turner (Emma Covert)
3751 South 1215 East
Salt Lake City, UT 84106-2429
honder@excite.com

Mark Andrus, Mailing List Compiler
450 East 1980 North
Provo, UT 84604
andrusrm@qwest.net

P. S. Your feedback on your interests and your abilities to help in the work of the Milo Andrus Family Organization will be appreciated. Enclose your comments when you send in the form enclosed with your dues and your contribution to research activity.